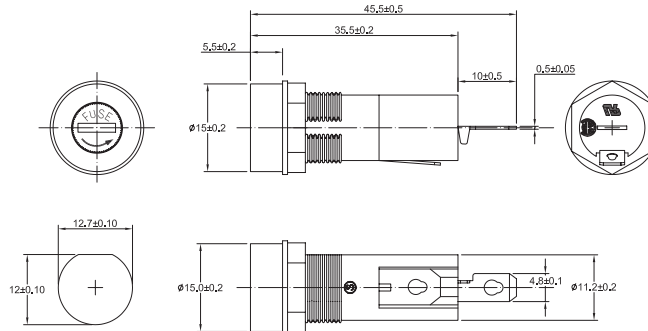


# GPM SERIES

## PANEL MOUNT/FUSE HOLDERS



**GPM-A11**



CAT. NO.	CAP TYPE	VOLTS	AMPS	FUSE SIZE	TERMINAL TYPE	APPROVALS
GPM-G	Finger-grip/Screw-in	250	15	3AG	3/16" Solder/QC	UR/CSA
GPM-G1	Finger-grip/Screw-in	250	10	3AG	3/16" Solder/QC	UR/CSA
GPM-G2	Finger-grip/Screw-in	250	10	3AG	Solder	
GPM-G3	Screwdriver Slot	250	10	3AG	Solder	UR/CSA
GPM-G5	Finger-grip/Bayonet	250	10	3AG	1/4" Solder/QC	UR/CSA
GPM-G6	Finger-grip/Bayonet	250	10	3AG	Solder	UR/CSA
GPM-G7	Screwdriver Slot	250	15	3AG	3/16" Solder/QC	UR/CSA
GPM-G8	Finger-grip/Screw-in	250	15	3AG	Quick-connect	

# GPM SERIES

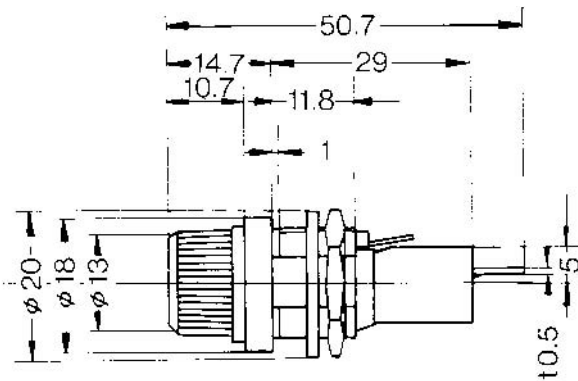
## PANEL MOUNT/FUSE HOLDERS

### RECOMMENDED FUSE USAGE

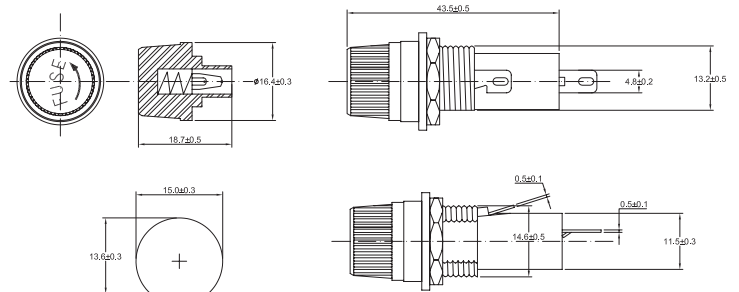
GPM-G: GGC, GDL, GSA, GAB



GPM-G



GPM-G1

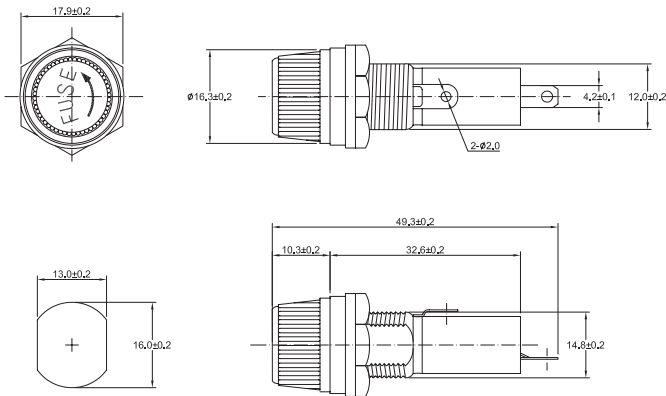


# GPM SERIES

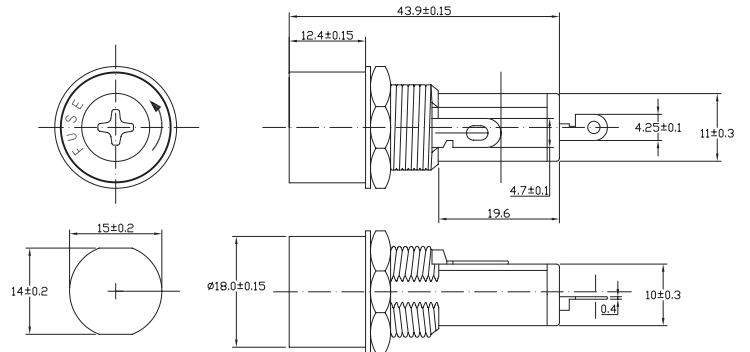
# PANEL MOUNT/FUSE HOLDERS



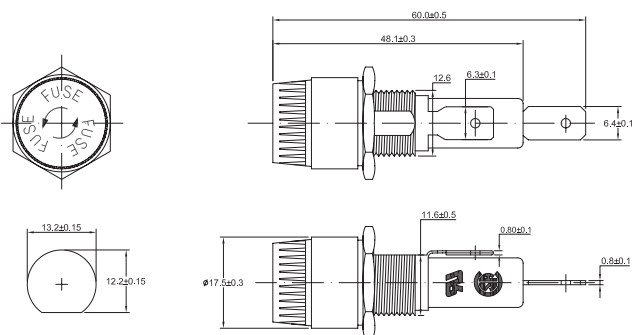
**GPM-G2**



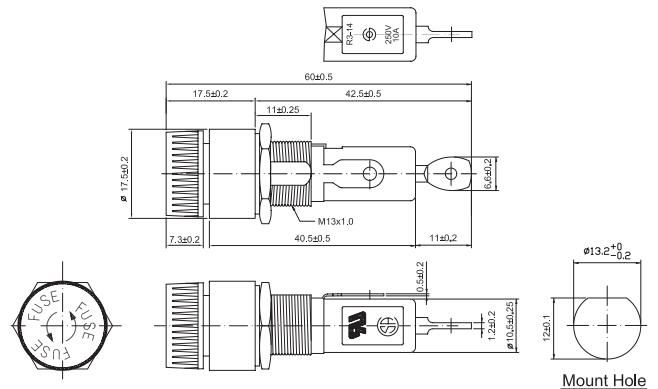
**GPM-G3**



**GPM-G5**



**GPM-G6**



# GPM SERIES

# PANEL MOUNT/FUSE HOLDERS



**GPM-G7**



**GPM-G8**

